

Super Fly

Album: Super Fly

Bass: Joseph Lucky Scott

Curtis Mayfield

♩=119

E7

The first system of the bass line for 'Super Fly' consists of three staves. The key signature is three sharps (F#, C#, G#) and the time signature is 4/4. The tempo is marked as quarter note = 119. The first staff begins with a whole note E7 chord. The bass line is a continuous eighth-note pattern: E2 (quarter), F#2 (quarter), G#2 (quarter), A2 (quarter), B2 (quarter), C#3 (quarter), D3 (quarter), E3 (quarter), and so on, with various ties and slurs.

Verse **E7**

The Verse section consists of two staves. It continues the eighth-note bass line pattern from the first system, maintaining the E7 chord.

Chorus **E7** **D.** **A** **E7** **D.** **A**

The first part of the Chorus consists of two staves. The first staff has a whole note E7 chord. The second staff has a whole note D. chord, followed by a whole note A chord, and then a whole note E7 chord. The bass line continues with the eighth-note pattern.

Verse **E7**

The second Verse section consists of two staves. It continues the eighth-note bass line pattern from the first system, maintaining the E7 chord.

Chorus **E7** **D.** **A** **E7** **D.** **A**

The second part of the Chorus consists of two staves. The first staff has a whole note E7 chord. The second staff has a whole note D. chord, followed by a whole note A chord, and then a whole note E7 chord. The bass line continues with the eighth-note pattern.

Super Fly

Break

C A C A C

A⁷/E

C A C A C A C

E A

G A B⁷

E⁷

Verse

Chorus

E⁷ D A E⁷ D A

E⁷ D A E⁷ B A E

E⁷

Super Fly

3

Bass sheet music for the song 'Super Fly'. The music is written in bass clef with a key signature of three sharps (F#, C#, G#). The piece consists of six staves of music, each with a specific chord indicated above it: E, A, G, A, G, and E. The notation includes various rhythmic values such as eighth notes, quarter notes, and half notes, along with rests and accidentals. The final staff ends with a double bar line and a repeat sign.

E A G A G E

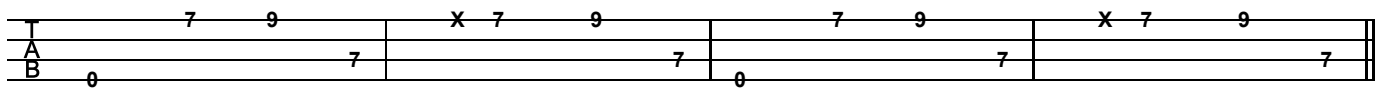
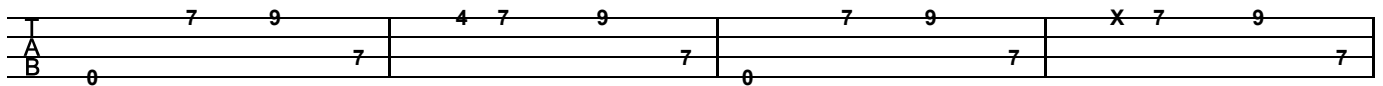
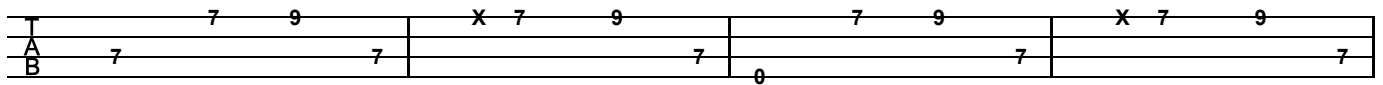
Super Fly

Album: Super Fly

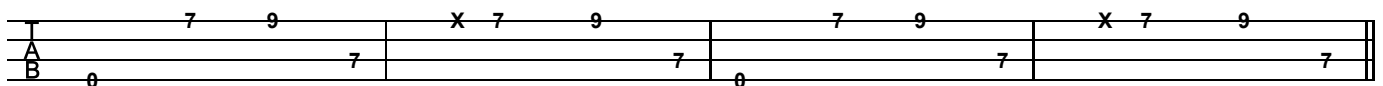
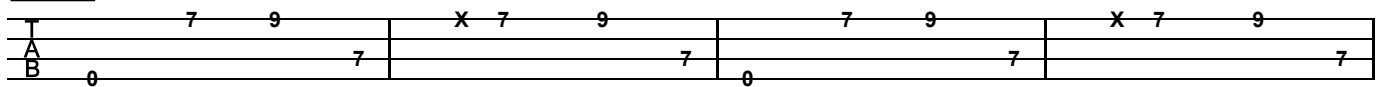
Bass: Joseph Lucky Scott

Curtis Mayfield

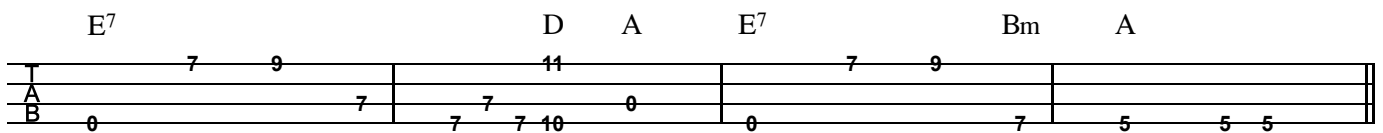
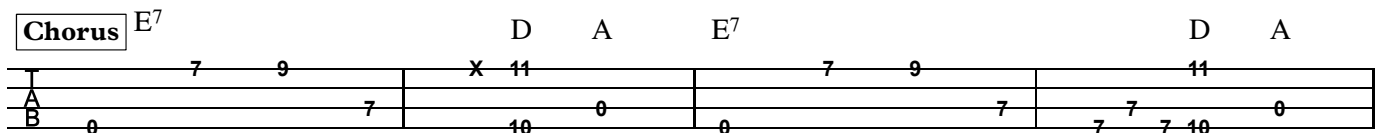
♩=119 E⁷



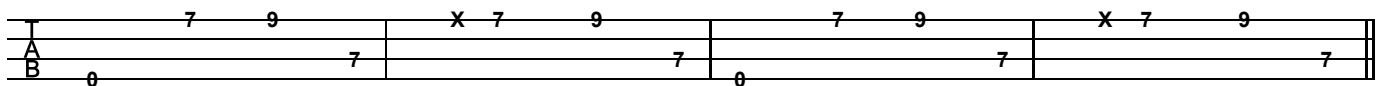
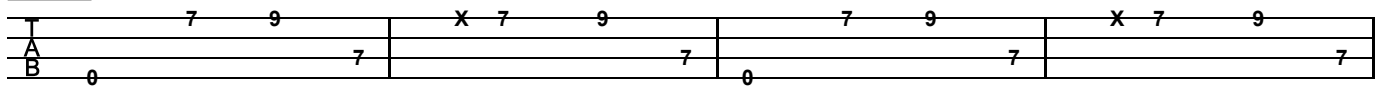
Verse E⁷



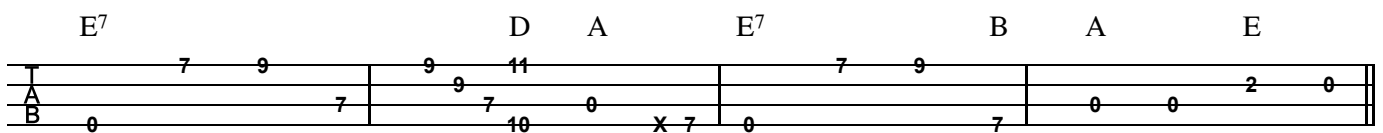
Chorus E⁷



Verse E⁷



Chorus E⁷



Super Fly

Break C A C A C

A⁷/E

C A C A C A C

E A

G A B⁷

E⁷

E⁷

Verse E

E⁷

Chorus E⁷ D A E⁷ D A

E⁷ D A E⁷ B A E

E⁷

Super Fly

3

7 9 4 7 9 7 9 7 X 7 9 0

0 7 7 0

E A

2 2 2 2 2 2 2 0 0 0 2 2 0 0 0 0 5 6 7 2 2 2 2

2 0 4 0 0 2 0 0 0 0 0 0 0 0 0 0 0 0 0 0 0 0

G A

5 5 3 4 5 0 0 0 0 5 6 7 0

3 3 3 3 3 3 3 4 0 0 0 0 0 0 0 0 0 0 0 0 0 0

E A

9 9

7 7

G A

3 4 5 5 6 7 0 0 7 0 7 7

3 3

E

9

0